

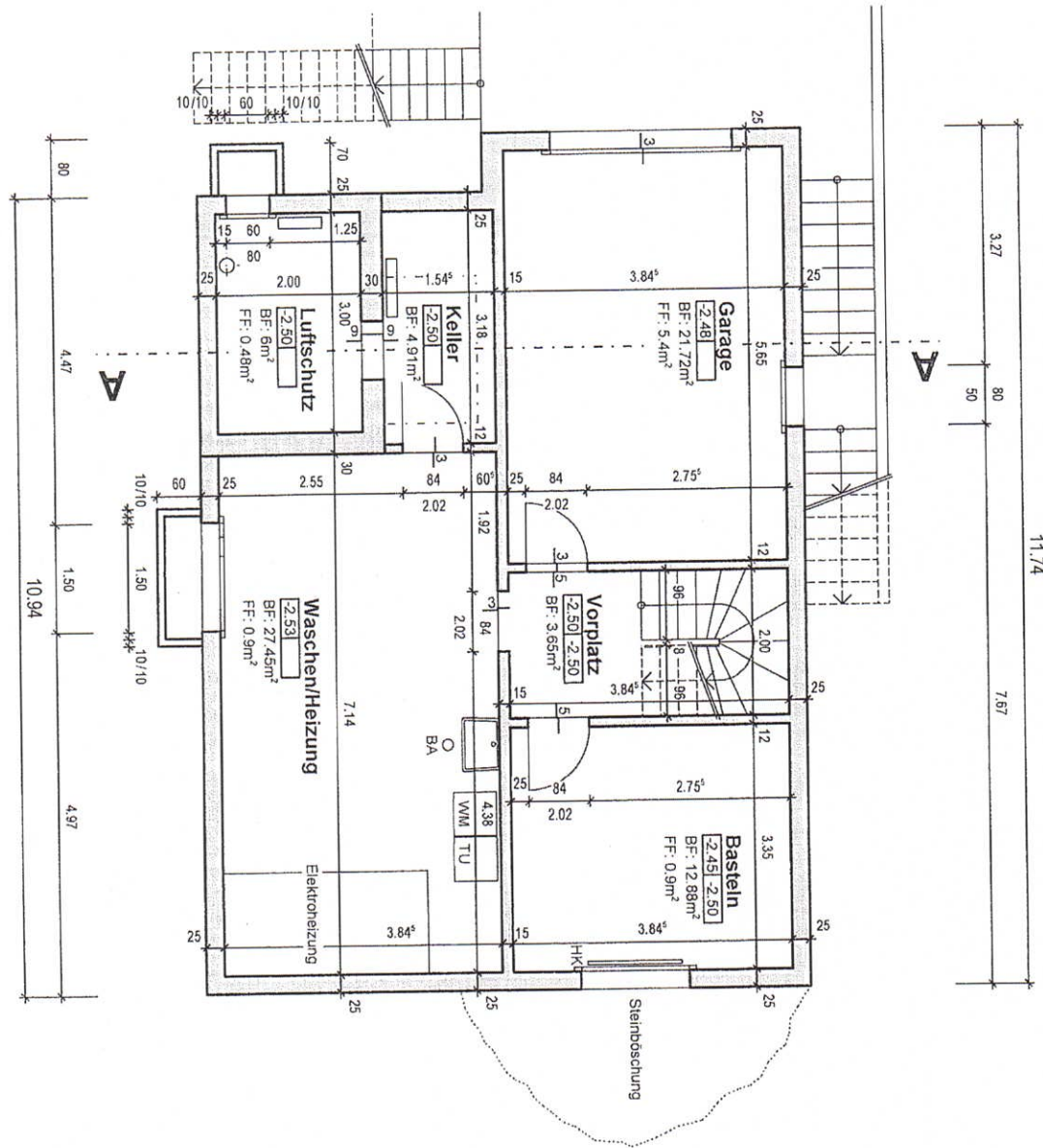
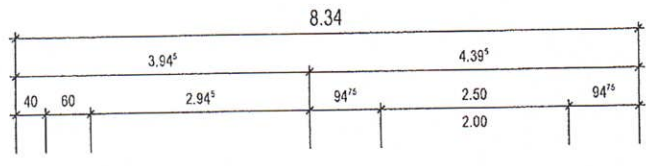
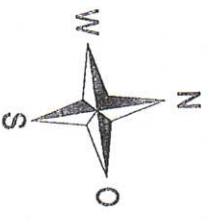
Sonnenweg 3 031 920 12 12  
 Postfach 475 office@schildarch.ch  
 3098 Könitz schildarch

EFH  
 Hertensbrünnenweg 18  
 3098 Schliern b. Könitz

Datum 31.05.2023/fs  
 Plan Nr. 2309/101  
 Parz. Nr. 7764  
 Plan Gr. A4  
 Mst. 1:100

## Grundriss Untergeschoss

### Aufnahmeplan



Parzellenfläche: 598m<sup>2</sup>  
 Bruttofläche: 94.76m<sup>2</sup>  
 Nettofläche (BF): 76.61m<sup>2</sup>

